

# CLAMP WITH RETRACTABLE ARM

Clamp with combined actions  
 Arm retraction  
 Extremely compact clamp  
 Ultra-quick action



**Clamp**  
 With clamping key and M10 x 35 mm clamping screw, aluminium body, steel arm.



**Record** clamping and unclamping times

Terrific	Clamping Force	Reach	Clamping Height	Torque	Ref.
Short arm	11000 N.	30	22 to 26 mm	20 N.m	23-020
<b>Clamping key</b>					23-150

Use :  
 For series assembly

**Principle :**  
 When the key is turned two movements are carried out consecutively :

- A horizontal movement places the clamping arm in position for clamping.
- A vertical movement clamps the workpiece.

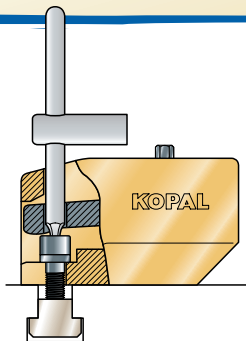
**Continuous turning of the key**

The arm is retracted inside the body

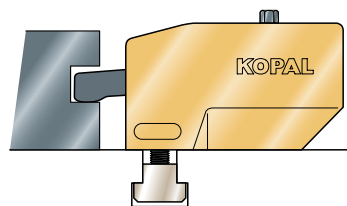
**Workpiece changeover**

**Extension of arm**

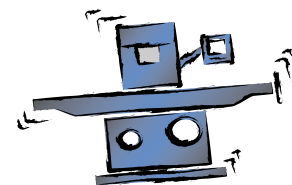
**Clamping of workpiece**



Simple and quick mounting with M 10 screw (provided)



Compact, space-saving clamp



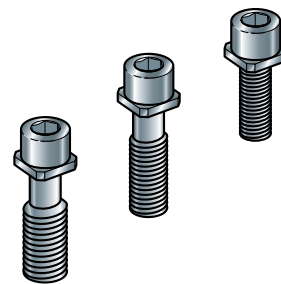
A mechanical clamp, which is particularly suitable for series production requiring extremely quick workpiece changeover.

### Terrific fittings

Ref.

M 10 Mounting screw	for slot sizes	Ref.
M 10 x 35	12 and 14 mm	06-080
M 10 x 40	16 and 18 mm	06-085
M 10 x 45	20 and 22 mm	06-090

Mounting screw	for tapped holes	Ref.
M 12 x 40	M 12	06-065
M 14 x 45	M 14	06-070
M 16 x 45	M 16	06-075

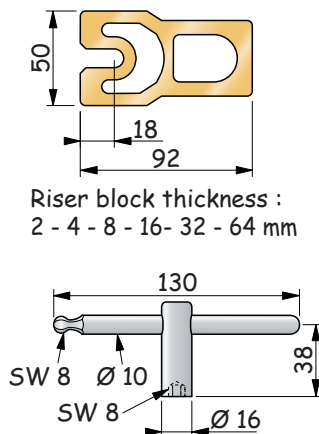
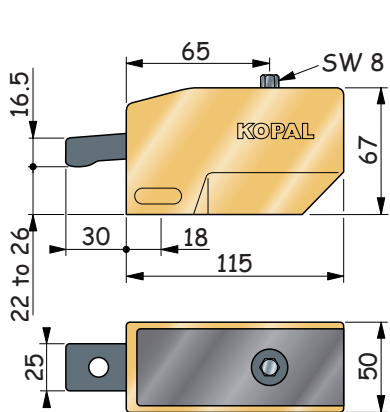
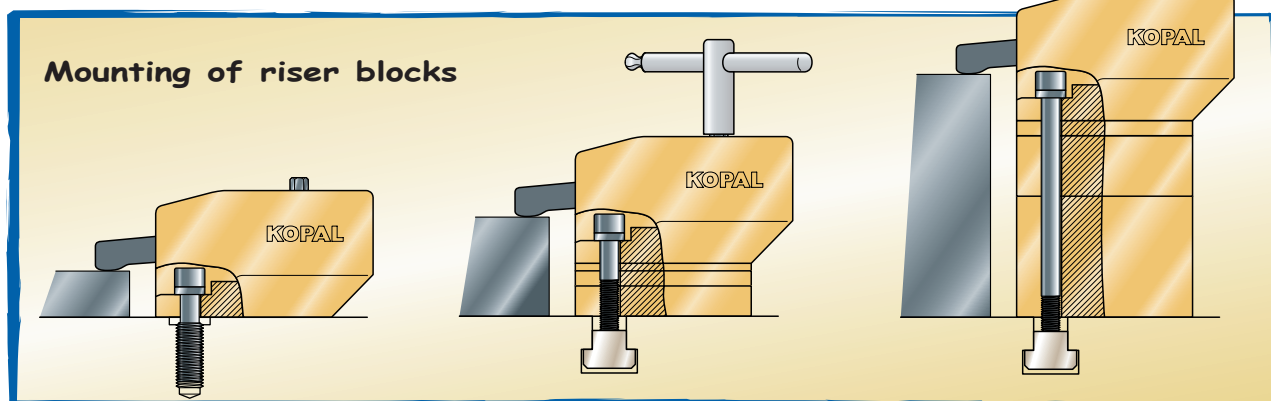
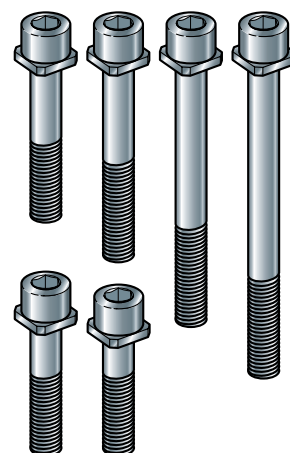
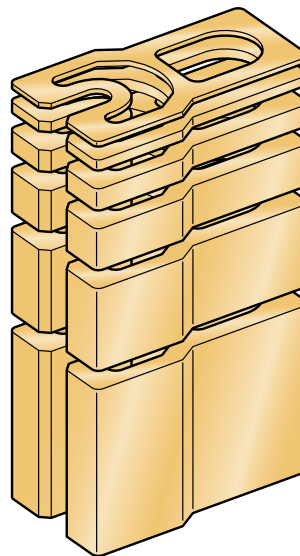


### Set of 6 riser blocks

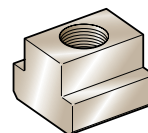
23-080

Aluminium riser blocks supplied with 6 x M10 screws of various lengths. These riser blocks can raise the clamping height of Terrific up to 126 mm

Riser block thicknesses : 2 - 4 - 8 - 16 - 32 - 64 mm.  
 M 10 x : 45 - 50 - 60 - 75 - 100 - 120 mm.  
 Match the length of the screw to the height of the riser block used.



Riser block thickness :  
 2 - 4 - 8 - 16 - 32 - 64 mm



M 10 T-nuts	Slot size	Ref.
	12 mm	90-100
	14 mm	90-105
	16 mm	90-110
	18 mm	90-115
	20 mm	90-120
	22 mm	90-125
	24 mm	90-130
	28 mm	90-135