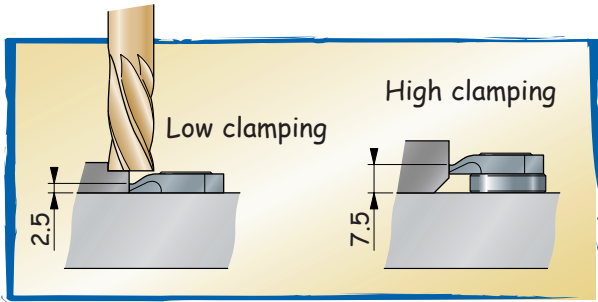
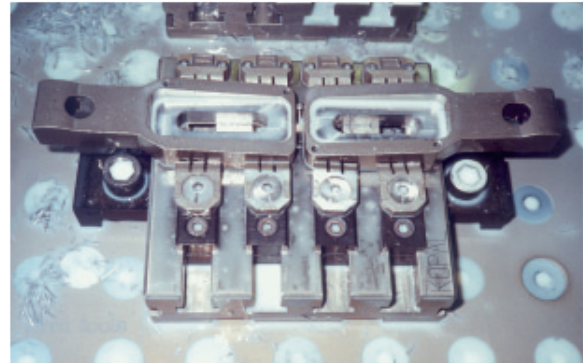


MINI-CLAMP SYSTEM Multi-Clamping

The mini clamping system with tightening via eccentric, resulting in a very low space requirement.

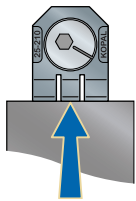
The eccentric ensures precise, fast and powerful clamping (4000 N).

With a height of less than 6 mm and a width of 20 mm, the plate clamps leave a maximum of space for tool clearance.

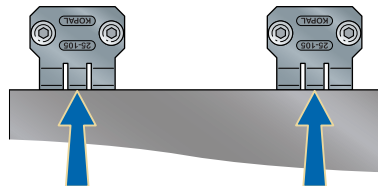


*Compact
Ultra-quick clamping
High clamping power
Cylindrical parts*

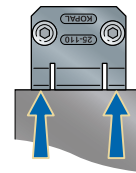
Clamp (1 single rigid stop)
Firmly presses the workpiece onto the stops.



Single stop (1 single rigid stop)
2 stops are necessary to position a workpiece along an axis.



Double stop (2 rigid stops)
1 stop is sufficient to position a small workpiece along an axis.



Clamping force : 6000 N
Clamping torque : 9 N.m
Clamping range : 1.2 mm

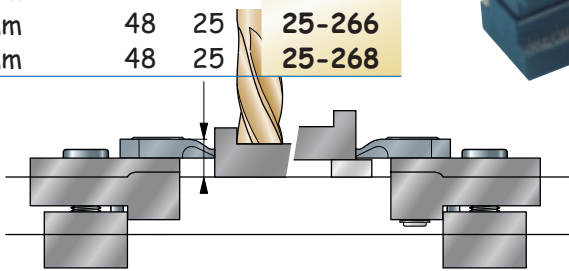
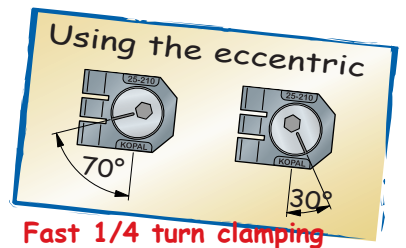
Clamp-slot for T-slot tables

Clamp-slot

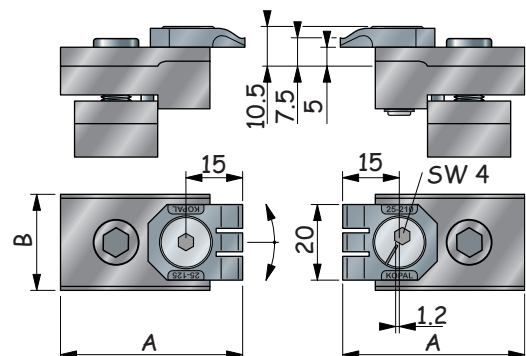
Equipment includes :

- 1 clamping element
- 1 stop element

for slots :	A	B	Ref.
10 mm	46	18	25-260
12 mm	48	18	25-262
14 mm	52	22	25-264
16 mm	48	25	25-266
18 mm	48	25	25-268



Workpiece supported on the table or raised with a wedge.
(for through-hole machining)



Mini-clamping for specific assembly

Clamping elements

Ref.

The moving clamp/locators pivot around an eccentric axis, which carries out the clamping. They can clamp in all directions.

Pillar-type moving clamp/locator
clamping height 2.5 mm

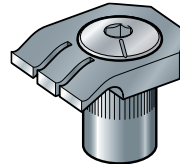
25-210

Raised pillar-type moving clamp/locator
clamping height 7.5mm

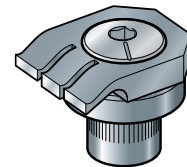
25-215

Clamping key (sold separately)
T-shaped, 4mm hexagonal

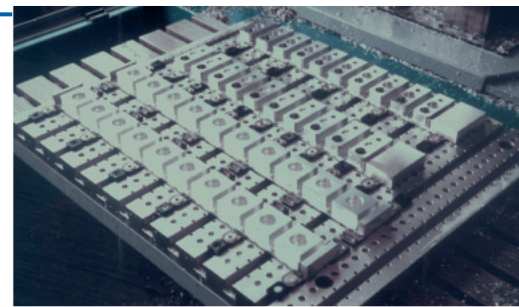
25-980



25-210



25-215



Stops

Ref.

Ground fixed stops are fixed in position with special screws ensuring high precision mounting.

Fixed clamp/locator
clamping height 2.5 mm

25-105

Double fixed clamp/locator
clamping height 2.5 mm

25-110

Raised fixed clamp / locator
clamping height 7.5 mm

25-115

Raised double fixed clamp / locator
clamping height 7.5 mm

25-120

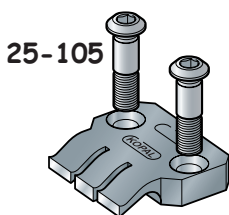
The ground swivel fixed stops are held in position with special screws ensuring high precision mounting.

Swivel fixed clamp-locator
clamping height 2.5 mm

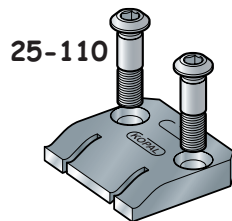
25-125

Raised swivel fixed clamp / locator
clamping height 7.5 mm

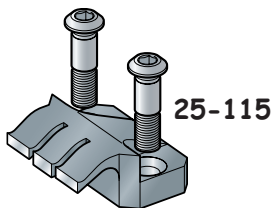
25-130



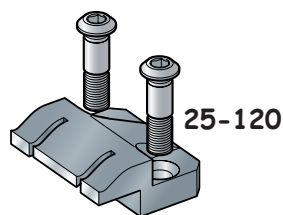
25-105



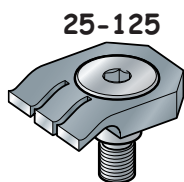
25-110



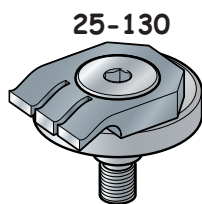
25-115



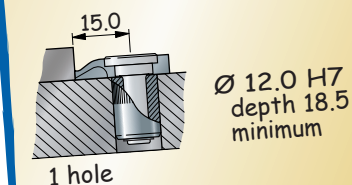
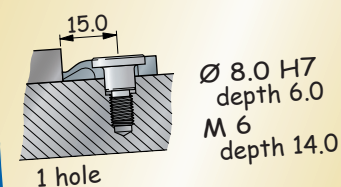
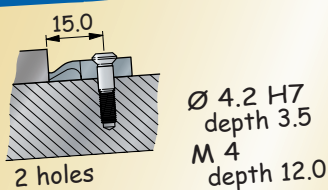
25-120



25-125



25-130



The distance of 15.0 is reduced to 14.0 for elements with round grinding.

Fixed clamp-locator

Double fixed clamp-locator

Swivel fixed clamp-locator

Moving clamp-locator

