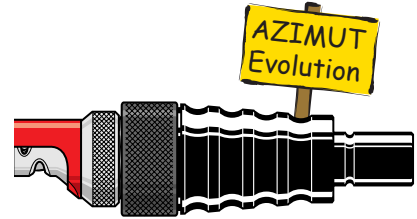


Mobile chamfering carriers composed of a rolling bearing, a carbide milling cutter, an interchangeable guide defining the chamfer or radius value and a linking component with flexible coupling.

i The **AZIMUT ÉVOLUTION** (ref. AZ-2...) carriers are solely designed for rapid installation on Turbo Classic and Turbo Tronic motors.



Chamfer consistency and quality
Quick tool changeover
Chamfering on straight or curved cutting edges

Principle

The cutter, driven directly by the flexible coupling, rotates inside a rolling bearing. The opening width of the guide placed on this bearing defines the chamfer or radius value to be performed. The cutter can be replaced after wear and tear.

AZIMUT EVOLUTION capacity	Milling Cutter all materials	Ref.	
Chamfer	0.3 and 0.6 mm	Ø 3 mm	AZ-212
	0.5 and 1 mm	Ø 3 mm	AZ-210
	1 and 2 mm	Ø 6 mm	AZ-225
Radius	1 and 1.5 mm	Ø 9 mm	AZ-255
	2 and 3 mm	Ø 9 mm	AZ-250

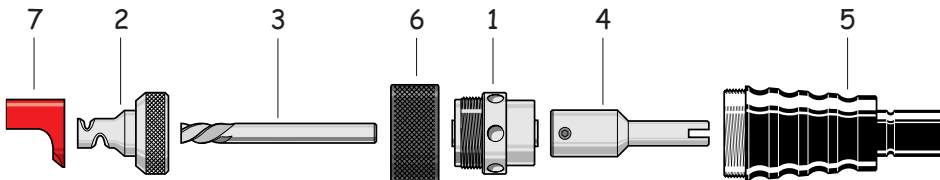


Components and cutters page 83

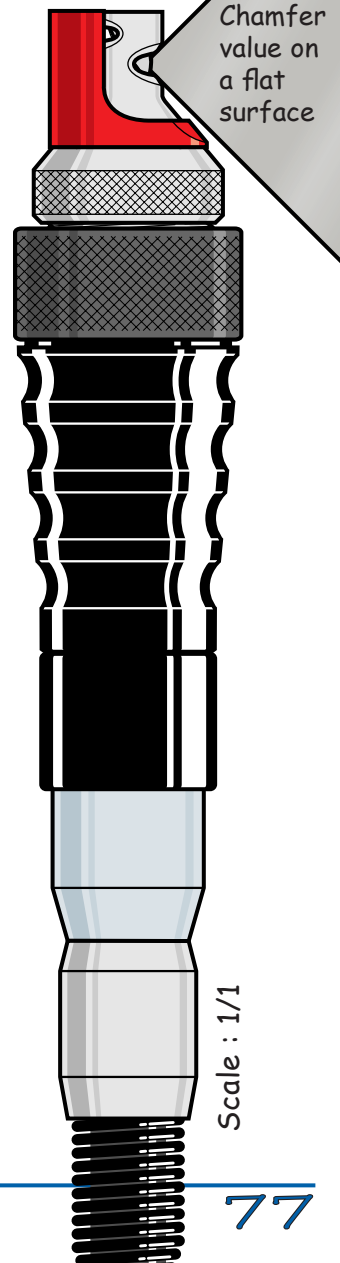
Motor and chamfering tools supplied separately.

AZIMUT EVOLUTION (with quick coupling handle)

To be used with Turbo Classic (AZ-006) and Turbo Tronic (AZ-003) transmissions.

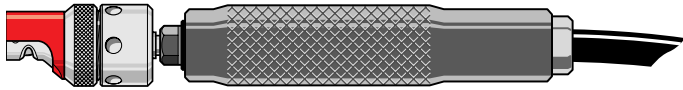


- 1 Ø 25 mm bearing (2 rolling bearings) Ref. : AZ-202
- 2 Interchangeable guide defining chamfer value
- 3 Carbide cutter, Ø 6 mm shank
- 4 Drive Ref. : AZ-305
- 5 Quick coupling handle Ref. : AZ-310
- 6 Attachment ring Ref. : AZ-736
- 7 Removable chip deflector



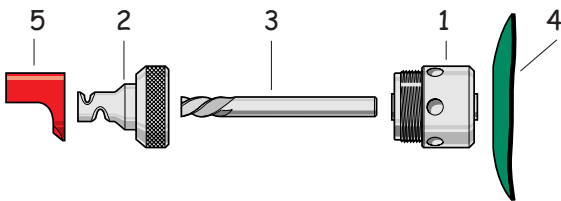
Scale : 1/1

i The Azimut Standard and Azimut Plus tools are designed for use with standard flexible transmission motors and with the Turboflex KOPAL motor Ref. AZ-007 (before 2001).



AZIMUT STANDARD

Can be used with all types of flexible couplings fitted with a \varnothing 6mm clip



- 1 \varnothing 25 mm bearing (2 rolling bearings) Ref. AZ-100
- 2 Interchangeable guide
- 3 Carbide cutter, \varnothing 6 mm shank
- 4 Heat protection shield Ref. : AZ-105
- 5 Removable chip deflector

AZIMUT

	Chamfer	Ref.
Standard Plus	0.3 and 0.6 mm	AZ-012 AZ-112
Standard Plus	0.5 and 1 mm	AZ-010 AZ-110
Standard Plus	1 and 2 mm	AZ-025 AZ-125

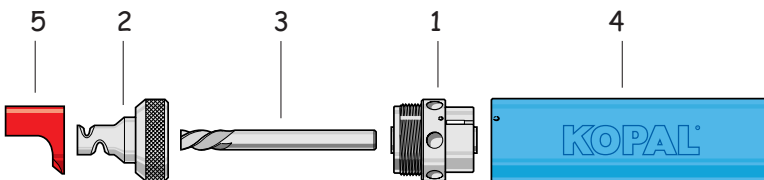
Radius

	Radius	Ref.
Standard Plus	1 and 1.5 mm	AZ-055 AZ-155
Standard Plus	2 and 3 mm	AZ-050 AZ-150



AZIMUT PLUS (with handle)

Can be used with KOPAL flexible couplings (Turboflex ref. AZ-007) and with standard flexible couplings fitted with a 6mm clip and with an outer chuck handle diameter not exceeding 20 mm



- 1 \varnothing 25 mm bearing (2 rolling bearings) Ref. : AZ-200
- 2 Interchangeable guide defining chamfer value
- 3 Carbide cutter, \varnothing 6 mm shank
- 4 \varnothing 25 mm aluminium handle Ref. AZ-090 : AZ-090
- 5 Removable chip deflector

Components and cutters page 82

