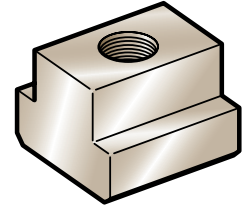


Standard T-nuts for T-slots

Slot size :	M 8 Ref.	M 10 Ref.	M 12 Ref.	M 14 Ref.	M 16 Ref.
10 mm	90-050				
12 mm	90-055	90-100			
14 mm	90-060	90-105	90-150		
16 mm	90-065	90-110	90-155	90-200	
18 mm	90-070	90-115	90-160	90-205	90-250
20 mm		90-120	90-165	90-210	90-255
22 mm		90-125	90-170	90-215	90-260
24 mm		90-130	90-175	90-220	90-265
28 mm		90-135	90-180	90-225	90-270



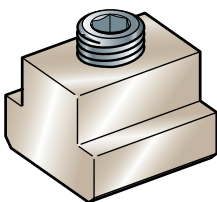
The T-nut is fitted with a flexible strip made from spring steel which presses it against the top of the T-slot. The T-nut does not fall into the T-slot and remains in place, even on a vertical table.

T-nuts with spring for T-slots

Slot size :	M 8 Ref.	M 10 Ref.	M 12 Ref.
12 mm	39-025	39-040	
14 mm	39-030	39-050	
16 mm	39-035	39-055	39-080
18 mm		39-060	39-085
22 mm		39-070	39-095

Anti sliding T-nuts

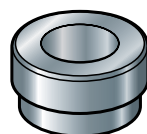
Slot size :	Ref.
12 mm	09-420
14 mm	09-425
16 mm	09-431
18 mm	09-436
20 mm	09-437
22 mm	09-443



These T-nuts prevent any sliding movement of clamp locators and driving clamps when used lengthways along the T-slots.

For quick and precise alignment of clamps and supports.

Ø 18 locator for 10000-Newton horizontal clamping system
 Ø 20 locator for 12000-Newton horizontal clamping system



Centring locator

Slot size :	Ø 18 Ref.	Ø 20 Ref.
12 mm	09-220	
14 mm	09-225	
16 mm	09-230	09-886
18 mm	09-215	09-888
20 mm	09-235	09-890
22 mm	09-240	09-892
24 mm		09-894
26 mm		09-896
28 mm		09-898